



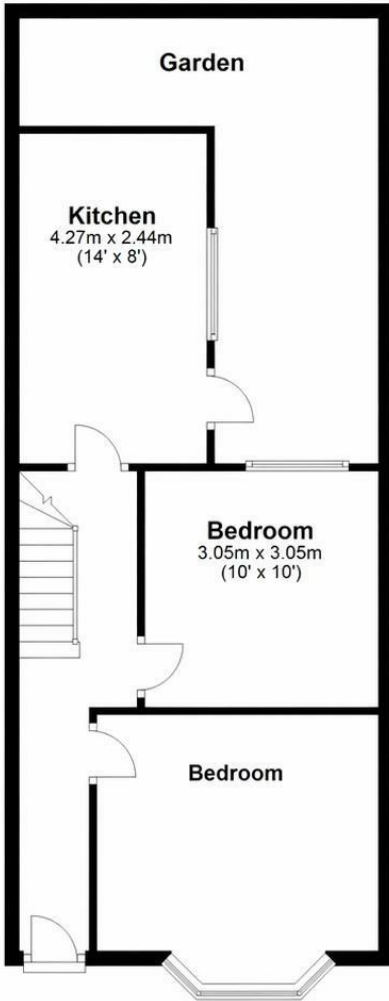
**4 Bed
House - Terraced
located in Brighton**

£575,000



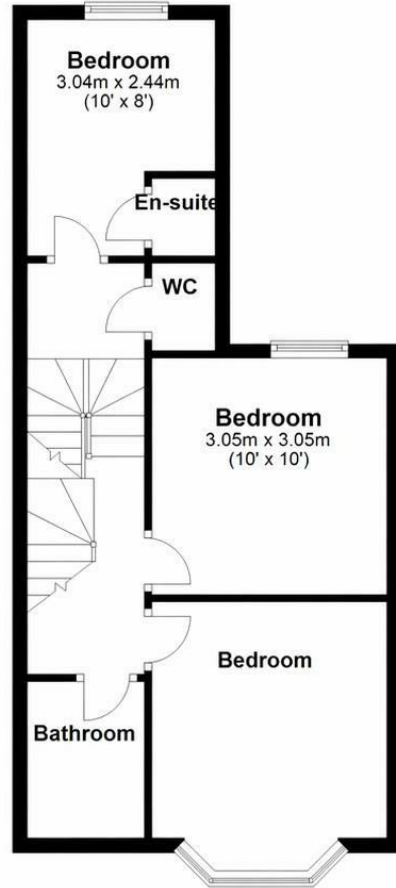
Ground Floor

Approx. 56.5 sq. metres (608.6 sq. feet)



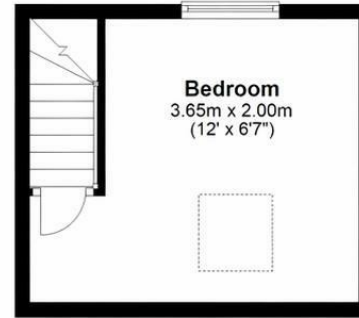
First Floor

Approx. 39.9 sq. metres (429.2 sq. feet)

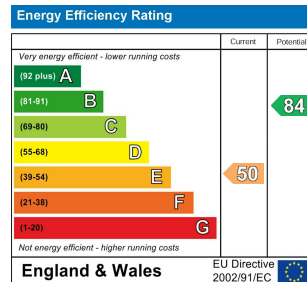


Second Floor

Approx. 15.5 sq. metres (167.3 sq. feet)



Total area: approx. 112.0 sq. metres (1205.2 sq. feet)



DIRECTIONS

CONTACT

Kendrick Property Services - Brighton
 10-12 Lewes Road
 Brighton
 East Sussex
 BN2 3HP

E: sales@kendrickpropertyservices.co.uk
 T: 01273 600162
www.kendrickpropertyservices.co.uk

